

BENJAMIN FAMILY.



BENJAMIN.

THE BENJAMIN COAT-OF-ARMS AND CREST.

This Coat-of-Arms, bearing the motto, "Poussez en avant" (push forward) is the one used conjointly by the Beringtons and Benjamins, and is supposed to have been granted at the knighting of a Berington at the field of Shrewsbury, July 21, 1403.

The Crest is a Chapeau or Duke's hat of crimson velvet, turned up with white ermine with a flame of fire; an emblem of ardent courage and perseverance.

BENJAMIN FAMILY.

FIRST GENERATION.

I.

I. JOHN BENJAMIN,¹ the first of that name in America, b. 1598, came over from England to Boston in the ship *Lion*, Captain Mason, on September 16, 1632, with his wife, Abigail Eddy, two children, and brother Richard.

Richard, in 1663, removed to Southold, Long Island, with his wife Ann and his daughter Ann, who was born September 1, 1643. He was made a Connecticut freeman 1664, and his descendants are influential in Queen's County, New York, politics at the present time.

John and his wife Abigail and their children Benjamin and Abigail, soon moved to Cambridge,

where they owned considerable real estate. John was made a freeman on November 6, 1632, and was appointed Constable by the General Court on May 20, 1633.

Of him, the history of Stratford, Conn., says :

“John Benjamin, Esquire, Gentleman, was the first of that name who came to this country. His ancestors were Welsh, and were among the first of the landed gentry of England. He came in company with Governor Winthrop to the Massachusetts Colony, and settled in Watertown, adjoining the present Cambridge, where he died in 1645. His house, accidentally destroyed by fire, was unsurpassed in elegance and comfort by any in the vicinity. It was a mansion of intelligence, refinement, religion, and hospitality, visited by the clergy of all denominations from far and near.”

In 1637, he removed to Watertown, where he died on June 14, 1645, it is supposed at an advanced age, as he was excused from military duty eleven years before. His will is abstracted in the Geneal. Register III, 177.

Abigail, his wife, died on May 20, 1687, at the age of 87.

CHILDREN II GENERATION.

- 2 JOHN, b. abt. ^{11 Sept} 1620; d. December 22, 1706.
- 3 ABIGAIL, b. abt. 1624.
- 4 SAMUEL, b. abt. 1628; d. 1669.
- 5 MARY, b. —; d. April 10, 1646.
- 6 JOSEPH, b. September 16, 1633.
- 7 JOSHUA, b. abt. 1642; d. 1684.
- 8 CALEB, b. —; d. 1684.
- 9 ABEL, b. —.

SECOND GENERATION.

6.

JOSEPH BENJAMIN,² (John,¹) s. of John and Abigail Benjamin, b. at Cambridge, Mass., September 16, 1633; m. at Barnstable, Mass., June 10, 1661, to Jemima Lambert, dau. of Thomas Lambert. She d. there, and he removed to Yarmouth, where, previous to December 7, 1668, he m., 2d, Sarah Clark. He removed to New London, Conn., where he d. in 1704.

CHILDREN III GENERATION.

- 10 ABIGAIL, b. —
- HANNAH, b. February —, 1668.
- 12 MARY, b. April —, 1670.
- 13 JOSEPH, b. —, 1673.
- 14 MERCY, b. March 12, 1674.
- 15 ELIZ., b. January 14, 1680.
- 16 JOHN, b. —, 1682; d. August 2, 1716.
- 17 JEMIMA, b. —.
- 18 SARAH, b. —.
- 19 KEZIA, b. —.



JOSEPH SEYMOUR BENJAMIN.^s

THIRD GENERATION.

13.

JOSEPH BENJAMIN,³ (Joseph,² John,¹) s. of Joseph and Sarah Benjamin, b. at Yarmouth, Mass., or New London, Conn., abt. 1673; m. August 25, 1698, Eliz. Cook.

CHILDREN IV GENERATION.

- 20 OBED, b. August 15, 1701.
- 21 ELIZ., b. November, 1703.
- 22 JOSEPH, b. 1705.
- 23 SARAH, b. January 17, 1707.
- 24 GRACE, b. January 10, 1709.
- 25 JEDEDIAH, b. July 15, 1711.
- 26 DANIEL, b. September 7, 1714.
- 27 JOHN, b. —.
- 28 ABIEL, b. December 17, 1716.

FOURTH GENERATION.

22.

JOSEPH BENJAMIN,⁴ (Joseph,⁸ Joseph,³ John,¹)
s. of Joseph and Eliz. Benjamin, b. at Pres-
ton, Conn., —, 1705; m. at Preston, Conn.,
April 3, 1722, to Deborah Clark. He d.
abt. 1803. She d. at Mount Washington or
Egremont, Mass., at the house of her son
Nathan.

CHILDREN V GENERATION.

- Elijah* 29 JOSEPH, b. December 17, 1723.
30 ~~ELIZ.~~, b. June 8, 1725.
31 JAMES, b. April 3, 1727.
32 BARZILLAI, b. March 28, 1730.
33 DEBORAH, b. March 26, 1732.
34 JOSIAH, b. March 13, 1734.
He d. 1785 35 NATHAN, b. April 19, 1737.
36 MARY, b. June 22, 1739.
37 ISAAC, b. April 15, 1742.



MARY BENJAMIN WHITEHEAD.⁸

FIFTH GENERATION.

29.

JOSEPH BENJAMIN,⁵ (Joseph,⁴ Joseph,³ Joseph,² John,¹) s. of Joseph and Deborah Benjamin, b. at Preston, Conn., December 17, 1723; m. at Preston, Conn., Abigail Dibble. He settled at Hampton, Conn. Some of his children removed to Mount Washington, Mass.

CHILDREN VI GENERATION.

- 38 WILLIAM, b. June 18, 1748.
- 39 SAMUEL, b. December —, 1749.
- 40 PELEG, b. March 5, 1752.
- 41 JUDAH, b. July 8, 1755.
- 42 MARY, b. abt. 1757.

The last four were baptized at Hampton, Conn., September 3, 1758.

SIXTH GENERATION.

41.

JUDAH BENJAMIN,⁶ (Joseph,⁵ Joseph,⁴ Joseph,³ Joseph,² John,¹) s. of Joseph and Abigail Benjamin, b. at Hampton, Conn., July 8, 1755, and removed to Mount Washington, Mass., abt. 1760, with his brothers William, Samuel and Peleg, and his sister Mary.

He served as a private, Connecticut Militia, Revolutionary War, from July 10, 1778, to July 14, 1779. He was m. abt. 1782, and had at least two children. In 1819 he resided in Hamilton, Madison Co., New York. He d. on August 16, 1834, at Pike Township, Bradford Co., Penn., leaving a widow, Susan, who might have been his second wife.

CHILDREN VII GENERATION.

43 ORANGE, b. January 26, 1784.

44 LAVINIA, b. ——. (Married a Wooden.)



JANE BENJAMIN FIELDS.⁸

State of Connecticut,
Adjutant General's Office,

HARTFORD, Feb. 16, 1898.

Mr. E. B. BAKER,

New Haven, Conn.

Sir—This is to certify that Judah Benjamin served in the War of the Revolution, and the following is said service, according to the records of this office.

On page 378. Conn. Men in the Revolution :

Judah Benjamin, a private, enlisted July 10, 1778. Term of service, one year ; from town of Milford ; occupation, shoemaker ; stature, 5 feet 7 in. ; complexion, dark ; eyes, grey ; hair, dark ; discharged in 5th Troop, Col. Elisha Sheldon's Light Dragoons, 1777. -83.

Its field of service during war generally the East side of the Hudson, along the Westchester front. Occasionally its companies served at different points. In the spring of 1777 Major Tallmadge joined Washington in New Jersey with two troops and fought at Germantown, October 4th. At the same time, Captain Seymour with his troop was serving under Gates against Burgoyne. The other troops were under Putnam's command at Peekskill.

In the spring of 1778, the regiment was on the Hudson, and in the fall formed part of Gen. Charles Scott's Light Corps, on the lines in Winchester.

On page 535, same book, appears the following :

Judah Benjamin ; a private in Captain Caleb Mix's Company. Arrived in camp July 17, 1778, in Colonel Moseley's Regiment.

Two militia regiments were ordered to the Hudson soon after the battle of Monmouth, June 28, 1778, and were stationed at different points, such as Fort Clinton, West Point. They were commanded by Colonel Moseley and Colonel Enos.

On page 641, same book, the name of Judah Benjamin appears as a Connecticut pensioner, Act of 1818, and as residing in New York.

In testimony whereof, we have affixed hereto the seal of this office.

(Signed) WM. E. F. LANDERS,
Col. and Asst. Adjutant General.

General Headquarters, State of New York,
Adjutant General's Office,

ALBANY, March 2, 1898.

Mr. E. B. BAKER,
New Haven, Conn.

Sir—I have the honor to acknowledge receipt of yours of the 18th ult., requesting information in relation to Judah Benjamin, a soldier in the War of the Revolution, and to say that, this office having no



CLARISSA BENJAMIN BAKER.ⁿ

records pertaining to the case, your letter was referred to the Comptroller of this State, who has returned the same, stating that the revolutionary records in that department have been carefully searched for the name of Judah Benjamin, but that it does not appear upon them.

It would seem that if this man was a pensioner, the information desired ought to be found in the U. S. Pension Department. The record forwarded by you is returned herewith.

Respectfully,

(Signed) FRED PHISTIER,
Assistant Adjutant General.

By direction of the Adjutant General.

Record and Pension Office,
War Department,

WASHINGTON, April 4, 1898.

Mr. E. B. BAKER,

New Haven, Conn.

Sir—The records of this office show that one Judah Benjamin served as a private in Captain Caleb Mix's detachment of Connecticut militia, commanded by Colonel Increase Moseley, Revolutionary War. He enlisted July 10, 1778, to serve two months; re-enlisted July 17, 1778, in Captain John Shethar's troop, 2d Regiment of Light Dragoons, Continental

troops, commanded by Colonel Elisha Sheldon, to serve one year, and he was discharged July 14, 1779.

The following remarks appear on the records :

“State of Connecticut;” “Town of Milford;” “trade, shoemaker;” “stature, 5 ft. 7 in.,” “complex., dark; eyes, grey; hair, dark.” No further information relative to his service has been found on record.

In view of the statement that the soldier was a pensioner, it is suggested as a possibility that additional information may be obtained from the Commissioner of Pensions, Washington, D. C., who is the custodian of the pension records of all wars, and whose office is separate and distinct from the Record and Pension Office of the War Department.

By authority of the Secretary of War,

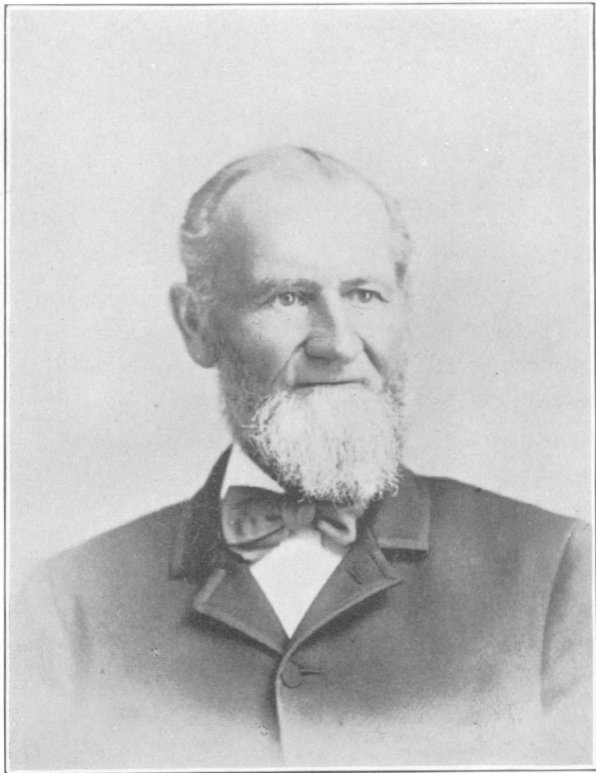
(Signed) F. C. AINSWORTH,
Colonel U. S. Army, Chief of Office.

Department of the Interior,
Bureau of Pensions,

WASHINGTON, April 15, 1898.

Mr. E. B. BAKER,
New Haven, Conn.

Sir—Replying to your recent communication, you are advised that Judah Benjamin made an application



ORANGE BENJAMIN.⁸

for pension on October 11, 1819, at which time he was 65 years of age, and residing at Hamilton, N. Y., and his pension was allowed for one year's actual service as a private in the Connecticut troops, Revolutionary War; a part of the time he served under Col. Sheldon. He enlisted at Claremont, N. H.

Very respectfully,
(Signed) H. CLAY EVANS,
Commissioner.

Department of the Interior,
Bureau of Pensions,

WASHINGTON, April 28, 1898.

Mr. E. B. BAKER,
New Haven, Conn.

Sir—Replying to your recent communication, you are advised that information as to date of death of Judah Benjamin can probably be obtained upon application to the Hon. Auditor for the Interior Department, Treasury Department, this city, furnishing the soldier's service as set forth in this Bureau's letter of the 15th inst., together with the following data: Cert. No. 15762; New York Agency (Transferred to Penna. Agency); Act of March 18, 1818.

Very respectfully,
(Signed) H. CLAY EVANS,
Commissioner.

Treasury Department,
Office of the Auditor for the Interior Department,
WASHINGTON, May 5, 1898.

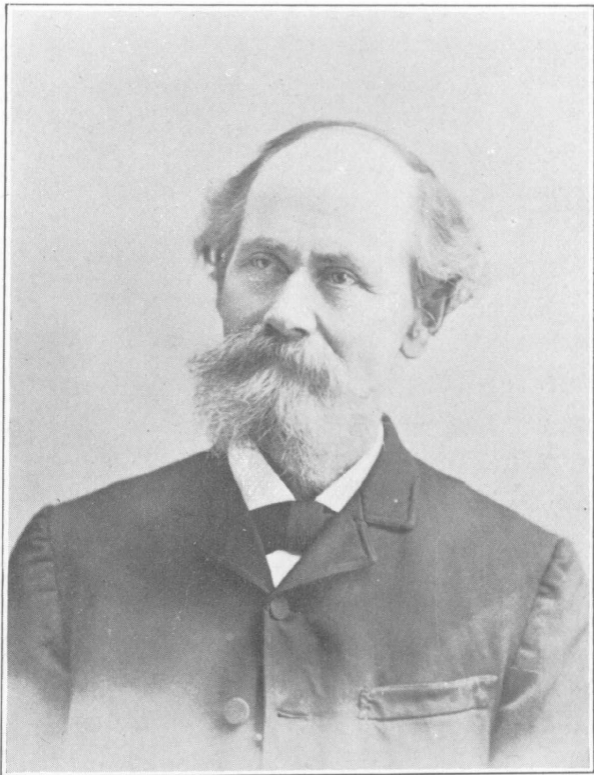
Mr. E. B. BAKER,
New Haven, Conn.

Sir—In reply to your letter of May 3rd, in case of Judah Benjamin, Certificate 15762, New York and Penna. Agencies, Revolutionary roll, you are informed that the records of this office show payment to have been made at \$8.00 per month in September 1834, to August 16, 1834, date of death.

The pensioner died on the above date at Pike Township, Bradford County, Pennsylvania, leaving a widow Susan Benjamin, to whom the accrued pension was paid as above stated.

In July, 1820, pensioner resided at Hamilton, Madison County, New York.

Respectfully yours,
(Signed) Wm. YOUNGBLOOD,
Auditor.



JOHN PECK BENJAMIN.⁸



ORANGE BENJAMIN.⁷

SEVENTH GENERATION.

43.

ORANGE BENJAMIN,⁷ (Judah,⁶ Joseph,⁵ Joseph,⁴ Joseph,³ Joseph,² John,¹) s. of Judah and — Benjamin, b. at Mount Washington, Mass., January 26, 1784; m. at Sheffield, Mass., March 10, 1811, to Clarissa Thorp. He d. at Dover, N. Y., October 5, 1846. She d. at Brooklyn, N. Y., August 1, 1852.

CHILDREN VIII GENERATION.

45 JOSEPH SEYMOUR, b. December 3, 1811; d. June 20, 1870.

46 HIRAM, b. July 26, 1813; d. November 11, 1850.

47 MARY, b. July 15, 1815.

48 LAURA, b. June 4, 1817; d. June 20, 1859.

49 HARRIET WHIPPLE, b. July 8, 1819; d. May 20, 1834.

50 JANE, b. July 20, 1822.

51 CLARISSA, b. July 29, 1824; d. October 16, 1890.

52 ORANGE, b. March 8, 1828.

53 JOHN PECK, b. October 10, 1830.

54 RICHARD GRAHAM, b. December 14, 1833.

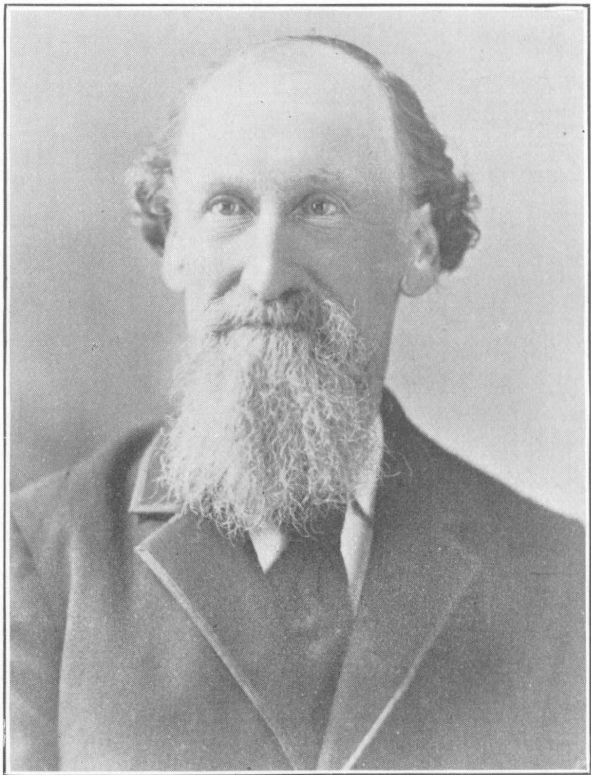
EIGHTH GENERATION.

45.

JOSEPH SEYMOUR BENJAMIN,⁸ (Orange,⁷ Judah,⁶ Joseph,⁵ Joseph,⁴ Joseph,³ Joseph,² John,¹) s. of Orange and Clarissa Benjamin, b. at Sheffield, Mass., December 3, 1811; m. at Dover, N. Y., January 2, 1833, to Emily Ann Woolsey. He d. at Elizabeth, N. J., June 20, 1870. She d. at Elizabeth, N. J., April 16, 1893.

CHILDREN IX GENERATION.

- 55 CORNELIA JEANNETTE, b. April 9, 1834; d. February 9, 1890.
- 56 PHOEBE ANN, b. May 6, 1836.
- 57 SARAH ELIZABETH, b. January 1, 1839.
- 58 JOHN WOOLSEY, b. September 3, 1841; d. November 14, 1895.



RICHARD GRAHAM BENJAMIN.*

HIRAM BENJAMIN,⁸ (Orange,⁷ Judah,⁶ Joseph,⁵ Joseph,⁴ Joseph,³ Joseph,² John,¹) s. of Orange and Clarissa Benjamin, b. at Sheffield, Mass., July 26, 1813; m. at Leroy, N. Y., May 10, 1837, to Mary Ann Train. He d. at sea, November 11, 1850, while returning from California. She d. at Claremont, Va., June 12, 1889.

CHILDREN IX GENERATION.

- 59 ALBERT CLEMENT, b. March 20, 1838; d. January 12, 1839.
 60 WILLIAM HENRY, b. December 21, 1839; d. January 20, 1842.
 61 CHARLES ANDREW, b. January 14, 1842.
 62 HARVEY LEROY, b. September 8, 1844.
 63 OLIVE JANE, b. September 27, 1849.

MARY BENJAMIN,⁸ (Orange,⁷ Judah,⁶ Joseph,⁵ Joseph,⁴ Joseph,³ Joseph,² John,¹) dau. of Orange and Clarissa Benjamin, b. at Sheffield, Mass.,

July 15, 1815; m. at Sheffield, Mass., March 13, 1839, to Rufus Justus Whitehead. He d. at Wallingford, Conn., October 24, 1866. She now resides at Meriden, Conn.

CHILDREN IX GENERATION.

- 64 MARCUS JUSTUS, b. November 19, 1841.
65 LUTHER HENRY, b. August 16, 1843.
66 JAMES ALONZO, b. April 16, 1845; d. February 20, 1855.
67 EMORY JOHN, b. November 12, 1846.
68 MARY ELLEN, b. September 7, 1848.
69 RUFUS MURVILLE, b. July 8, 1850; d. March 13, 1851.
70 BEULAH MATTHEWSON, b. February 16, 1852.
71 JIMMIE BENJAMIN, b. October 21, 1858; d. April 5, 1866.

48.

LAURA BENJAMIN,⁸ (Orange,⁷ Judah,⁶ Joseph,⁵ Joseph,⁴ Joseph,³ Joseph,² John,¹) dau. of Orange and Clarissa Benjamin, b. at Sheffield, Mass.,



PHOEBE ANN BENJAMIN DUCKER.⁹

June 4, 1817; m. at Dover, N. Y., November 7, 1839, to Hosea D. Lane. He d. at Dover, N. Y., abt. 1846. She m., 2d, at Poughkeepsie, N. Y., abt. 1848, Joseph Dennis. She d. at Dover, N. Y., June 20, 1859. He d. at Southford, Conn., February 14, 1898, at the age of 87 years and 5 months.

CHILDREN IX GENERATION.

72 SARAH MARIA LANE, b. August 2, 1845; d. October 9, 1883.

73 JANE DENNIS, b. July 13, 1850.

74 EMILY, b. April 26, 1852.

75 JOSEPH BENJAMIN, b. July 21, 1858; d. September 29, 1893.

50.

JANE BENJAMIN,⁸ (Orange,⁷ Judah,⁶ Joseph,⁵ Joseph,⁴ Joseph,³ Joseph,² John,¹) dau. of Orange and Clarissa Benjamin, b. at Sheffield, Mass., July 20, 1822; m. at Buffalo, N. Y., September 21, 1848, to Eli Fields. He d. at Buffalo,

N. Y., October 3, 1883. She now resides at Newark, N. J.

CHILDREN IX GENERATION.

76 IDEN HENRY, b. July 4, 1849, at Troy, N. Y.

77 JENNIE ELIZA, b. March 9, 1853.

78 HARRIET MARY, b. October 3, 1861; d. March, 1863.

79 HARRY WHITE, b. January 15, 1865.

51.

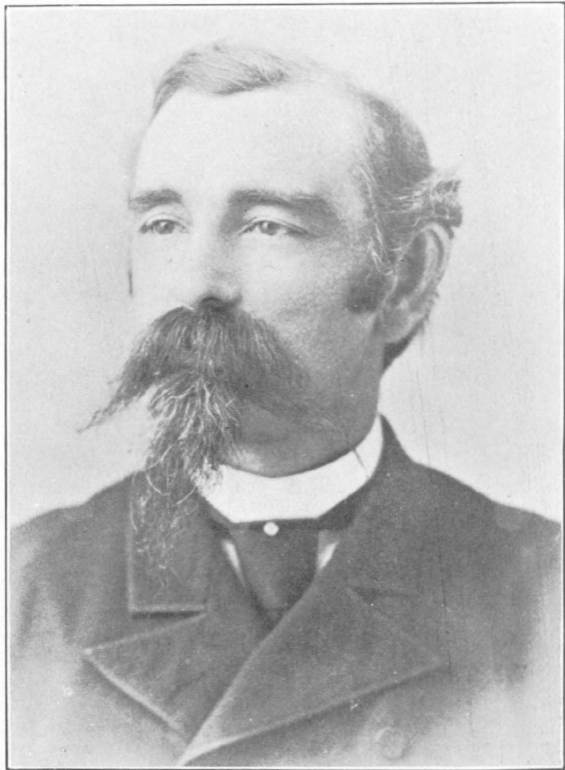
CLARISSA BENJAMIN,⁸ (Orange,⁷ Judah,⁶ Joseph,⁵ Joseph,⁴ Joseph,³ Joseph,² John,¹) dau. of Orange and Clarissa Benjamin, b. at Sheffield, Mass., July 29, 1824; m. at Salisbury, Conn., April 18, 1847, to John Fletcher Baker. She d. at New Haven, Conn., October 16, 1890. He d. at Bristol, Conn., March 11, 1895.

CHILDREN IX GENERATION.

80 EMMERSON JOHN, b. February 14, 1848; d. October 8, 1849.

81 EMMA CLARISSA, b. September 25, 1850; d. September 8, 1851.

82 ELLIS BENJAMIN, b. September 24, 1854.



LT. THOMAS J. T. TILLOU.

ORANGE BENJAMIN,⁸ (Orange,⁷ Judah,⁶ Joseph,⁵ Joseph,⁴ Joseph,³ Joseph,² John,¹) s. of Orange and Clarissa Benjamin, b. at Sheffield, Mass., March 8, 1828; m. at Lakeville, Conn., January 1, 1851, to Jane L. Wright. She d. at Lakeville, Conn., August 25, 1875. He m. 2d, at Northeast, N. Y., September 7, 1876, Maria E. Stocking. She d. at Lakeville, Conn., April 23, 1892. He m. 3d, at Red Hook, N. Y., August 16, 1893, Mary F. Donnelly, who d. at Lakeville, Conn., November 10, 1895. He was a member of the Connecticut Legislature in 1876.

CHILDREN IX GENERATION.

83 MARY ELLEN, b. October 2, 1852.

84 ALICE LOUISA, b. June 14, 1855.

JOHN PECK BENJAMIN,⁸ (Orange,⁷ Judah,⁶ Joseph,⁵ Joseph,⁴ Joseph,³ Joseph,² John,¹) s. of

Orange and Clarissa Benjamin, b. at Sheffield, Mass., October 10, 1830; m. at Brooklyn, N. Y., April 23, 1851, to Harriet Augusta Turner. They now reside at Newark, N. J.

CHILDREN IX GENERATION.

- 85 WILLIAM TURNER, b. March 17, 1852.
86 GEORGE MILTON, b. November 11, 1853.
87 FRANCIS ASHENFELTER, b. April 16, 1856;
d. April 29, 1856.
88 HENRY CLAY, b. July 1, 1857.
89 MARIA AMELIA, b. April 4, 1866; d. May
15, 1866.
90 JOHN PECK, b. September 6, 1876.

RICHARD GRAHAM BENJAMIN,⁸ (Orange,⁷
Judah,⁶ Joseph,⁵ Joseph,⁴ Joseph,³ Joseph,²
John,¹) s. of Orange and Clarissa Benjamin, b.
at Sheffield, Mass., December 14, 1833; m. at



SARAH ELIZABETH BENJAMIN TILLOU.⁹

Dover, N. Y., August 19, 1859, to Hannah
Jane Rowe. They now reside at Woodbury,
Conn.

CHILDREN IX GENERATION.

- 91 CLARA, b. June 26, 1860; d. August 16,
1863.
92 O, b. February 17, 1865; d. February 25,
1865.
93 WILLIAM TURNER, b. August 17, 1867.
94 RANSON, b. May 11, 1876.

NINTH GENERATION.

55.

CORNELIA JEANNETTE BENJAMIN,⁹ (Joseph,⁸ Orange,⁷ Judah,⁶ Joseph,⁵ Joseph,⁴ Joseph,³ Joseph,² John,¹) dau. of Joseph and Emily Benjamin, b. at Dover, N. Y., April 9, 1834; m. at Brooklyn, N. Y., July 3, 1860, to Freeman Tooker. She d. at Brooklyn, N. Y., February 9, 1890. He d. at Brooklyn, N. Y., July 6, 1894.

CHILDREN X GENERATION.

95 JOHN BENJAMIN, b. May 21, 1861; d. May 6, 1887.

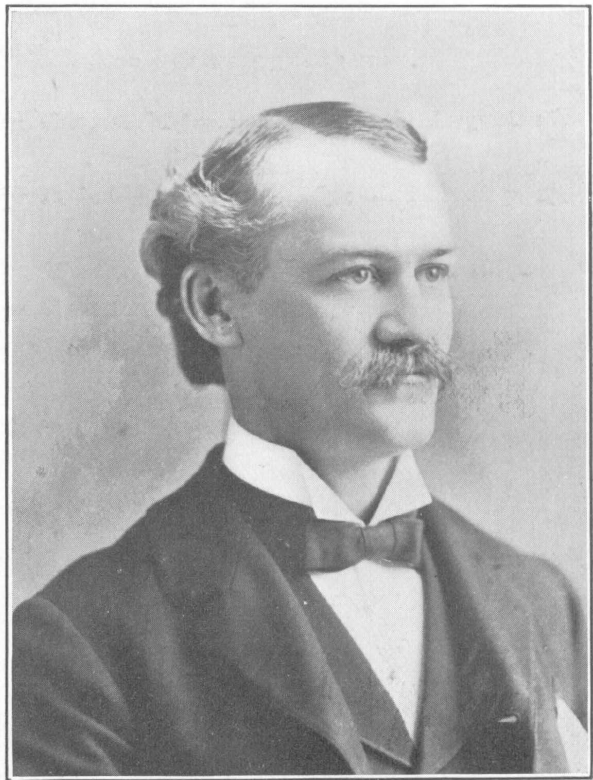
96 ALGERNON S., b. March 17, 1863; d. August 24, 1864.

97 MARY JEANNETTE, b. January 6, 1865.

98 WILLIAM SEYMOUR, b. March 13, 1869.

56.

PHOEBE ANN BENJAMIN,⁹ (Joseph,⁸ Orange,⁷ Judah,⁶ Joseph,⁵ Joseph,⁴ Joseph,³ Joseph,²



ELLIS BENJAMIN BAKER.⁹

Jóhn,¹) dau. of Joseph and Emily Benjamin, b. at Dover, N. Y., May 6, 1836; m. at Brooklyn, N. Y., December 25, 1855, to Peter Ducker. They now reside at Brooklyn, N. Y.

CHILDREN X GENERATION.

- 99 JOSEPH HENRY, b. November 26, 1856.
100 EMILY J., b. February 5, 1859.
101 ANNA S., b. June 28, 1861.
102 HARRIET A., b. September 4, 1865.

57.

SARAH ELIZABETH BENJAMIN,⁹ (Joseph,⁸ Orange,⁷ Judah,⁶ Joseph,⁵ Joseph,⁴ Joseph,³ Joseph,² John,¹) dau. of Joseph and Emily Benjamin, b. at Dover, N. Y., January 1, 1839; m. at Elizabeth, N. J., January 29, 1859, to Thomas J. T. Tillou. They now reside at Elizabeth, N. J.

Thomas J. T. Tillou, a lineal descendant of the French Huguenots, was born in New York City, February 10, 1839. He also comes from

old revolutionary sires, who fought to establish the government of the United States. His great grandparent, Captain Tillou, was wounded at the battle of Yorktown and the surrender of Cornwallis.

When the Civil War broke out, Mr. Tillou enlisted at the first call for volunteers. His company, designated as Co. A, 1st New Jersey Volunteers, soon elected him Second Lieutenant. On account of some jealousy manifested by the numerous army officers after the battle of Bull Run, his division was not credited for the conspicuous part that it took in covering the retreat of the Union troops. On several other occasions during the Rebellion, the 1st New Jersey took a prominent part, and Lieutenant Tillou with others had many narrow escapes from death.

He is at present treasurer of Kearney's First New Jersey Brigade, to which his regiment originally belonged. He has held many important positions at Elizabeth, where he has resided for the past 47 years, as a member of the Board of Education and the City Council.



MARY GORHAM FROST BAKER.

He is a fluent talker and an interesting conversationalist.

CHILDREN X GENERATION.

- 103 JEANNETTE, b. September 11, 1860, at Elizabeth, N. J.
104 THOMAS ALBERT, b. September 1, 1862, at Elizabeth, N. J.
105 WILLIAM GRAHAM, b. December 6, 1867, at Elizabeth, N. J.
106 JOSEPH BENJAMIN, b. July 28, 1870, at Elizabeth, N. J.

58.

JOHN WOOLSEY BENJAMIN,⁹ (Joseph,⁸ Orange,⁷ Judah,⁶ Joseph,⁵ Joseph,⁴ Joseph,³ Joseph,² John,¹) s. of Joseph and Emily Benjamin, b. at Dover, N. Y., September 3, 1841; m. at Elizabeth, N. J., December 7, 1861, to Abby T. Wilson. He d. at Elizabeth, N. J., November 14, 1895.

CHILDREN X GENERATION.

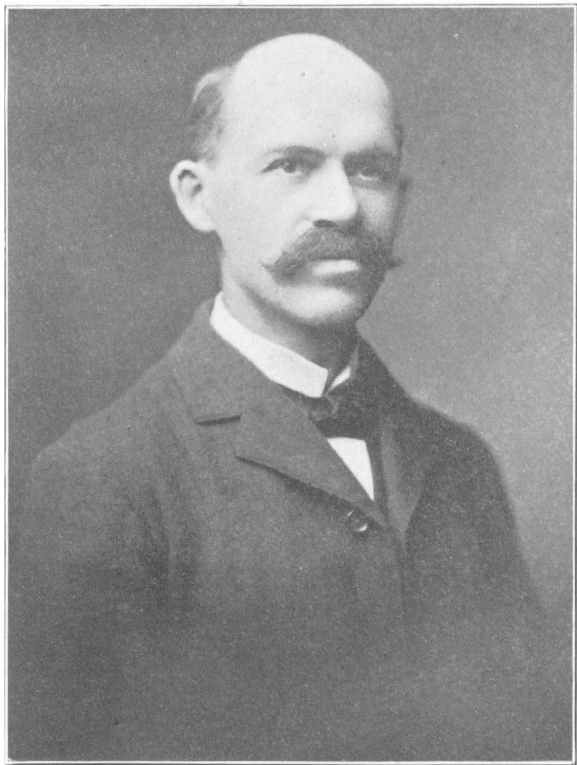
- 107 MARY FRANCES, b. August 11, 1863.
108 EDWARD, b. December 31, 1868.
109 ELLA, b. March 24, 1875.

CHARLES ANDREW BENJAMIN,⁹ (Hiram,⁸ Orange,⁷ Judah,⁶ Joseph,⁵ Joseph,⁴ Joseph,³ John,¹) s. of Hiram and Mary Benjamin, b. at Leroy, N. Y., January 14, 1842; m. at Saranac, Mich., April 4, 1865, to Anna Maria Furniss. They now reside at Saranac, Mich.

CHILDREN X GENERATION.

- 110 SHERMAN, b. March 7, 1866; d. June 9, 1867.
 111 KATE OLIVE, b. August 29, 1868.
 112 WILLIAM, b. August 29, 1870.
 113 JOHN, b. September 22, 1872.
 114 FRANKLIN HIRAM, b. July 1, 1874.
 115 GEORGE SEPTER, b. March 4, 1876.
 116 FRED AUGUSTUS, b. May 24, 1878.
 117 BENJAMIN STEPHEN, b. September 19, 1879.
 118 ROSE ESTELLA, b. July 8, 1882.

HARVEY LEROY BENJAMIN,⁹ (Hiram,⁸ Orange,⁷ Judah,⁶ Joseph,⁵ Joseph,⁴ Joseph,³ John,¹) s. of Hiram and Mary Benjamin, b. at Saranac, Mich., September 8,



WILLIAM TURNER BENJAMIN.⁹

1844; m. at Morrison, Ills., March 31, 1866, to Anna Eliza Clark. They now reside at Maquoketa, Iowa.

Harvey L. Benjamin enlisted in Co. E, 46th Illinois Volunteers at the call for troops at the breaking out of the late Civil War. His enlistment covered at first but three years, but he re-enlisted at Camp Cowan, Mississippi, for three more, and was discharged at the end of the war, June 20, 1866, at Baton Rouge, La.

His regiment was part of the army of the West, and took an active part in most of the greater battles of the war. At Fort Donelson, Shiloh, Corinth, Vicksburg, Jackson, Memphis, New Orleans, and Mobile, his company, which was assigned to the 2nd brigade, 4th division, suffered such losses that it was hardly recognizable when honorably discharged at the cessation of hostilities.

CHILDREN X GENERATION.

119 CHARLES JARVIS, b. July 17, 1867.

120 WILLARD ALVIRA, b. April 7, 1871.

121 ARTHUR JAMES, b. January 20, 1879.

122 IDA MAY, b. January 22, 1891; d. May 6, 1892.

OLIVE JANE BENJAMIN,⁹ (Hiram,⁸ Orange,⁷ Judah,⁶ Joseph,⁵ Joseph,⁴ Joseph,³ Joseph,² John,¹) dau. of Hiram and Mary Benjamin, b. at Saranac, Mich., September 27, 1849; m. at Saranac, Mich., November 17, 1870, to Charles Dorin. They now reside at Portsmouth, Va.

Charles Dorin enlisted in Co. G, 10th Michigan Cavalry Volunteers, when the late War of the Rebellion broke out. His company saw continuous service from the time of its muster in October 1863 until the close of the war, spending most of the time in the campaigns of Tennessee and North Carolina. He held the position of Sergeant in his company.

CHILDREN X GENERATION.

123 WILLIAM HIRAM, b. August 19, 1873.

124 HARLEY EDWARD, b. June 28, 1876.

MARCUS JUSTUS WHITEHEAD,⁹ (Mary,⁸ Orange,⁷ Judah,⁶ Joseph,⁵ Joseph,⁴ Joseph,³ Joseph,² John,¹) s. of Rufus and Mary (Ben-



JENNIE ELIZA FIELDS BENJAMIN.⁹

jamin) Whitehead, b. at Salisbury, Conn., November 19, 1841; m. at New Haven, Conn., June 4, 1865, to Lizzie Josephine Higgins. They now reside at Meriden, Conn.

Marcus J. Whitehead enlisted May 7, 1861, in the 2nd Connecticut Volunteers for a period of three months' service, and re-enlisted in '62 for three years more. His active service included the Battles of Bull Run, 1861; The Wilderness, Cold Harbor, Cedar Creek, in 1864; and at the defence of Washington upon the rumors of Lee's raid. He was given his discharge by order of the War Department June 1st, 1865. He was wounded at Cold Harbor in June '64, but remained with his company until its muster out.

CHILDREN X GENERATION.

- 125 EMORY ARTHUR, b. May 9, 1866.
- 126 ESTELLA LUELLA, b. September 6, 1868;
d. August 1, 1875.
- 127 BURTON OLIN, b. December 18, 1874.
- 128 VIOLA DAISY, b. June 18, 1877.
- 129 FLORENCE ALICE, b. November 11, 1882.
- 130 WALLACE ALMIRIAN, b. April 1, 1886.
- 131 CLIFFORD HARRISON, b. April 18, 1888.

LUTHER HENRY WHITEHEAD,⁹ (Mary,⁸ Orange,⁷ Judah,⁶ Joseph,⁵ Joseph,⁴ Joseph,³ John,¹) s. of Rufus and Mary (Benjamin) Whitehead, b. at Salisbury, Conn., August 16, 1843; m. at Mohawk, N. Y., February, 1862, to Miranda Wildy, who d. at Mohawk, N. Y., in 1864. He m. 2d, at New Haven, Conn., December 16, 1866, to Imogene Steele. They now reside at New Haven, Conn.

CHILDREN X GENERATION.

132 CARRIE B., b. December 15, 1863.

133 HATTIE L., b. October 4, 1867.

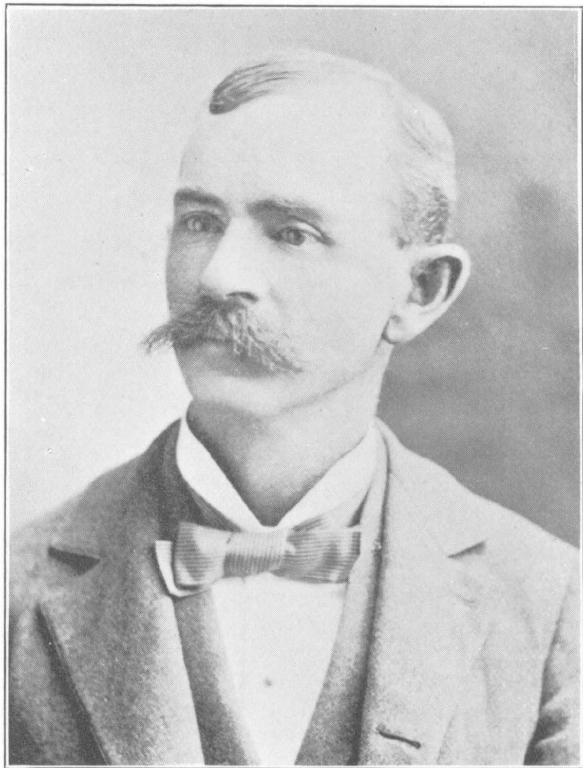
134 ALICE M., b. May 31, 1869; d. October 9, 1869.

135 IMOGENE L., b. May 15, 1874.

136 OSCAR N., b. November 26, 1881.

137 FLORENCE E., b. October, 1884.

EMORY JOHN WHITEHEAD,⁹ (Mary,⁸ Orange,⁷ Judah,⁶ Joseph,⁵ Joseph,⁴ Joseph,³ John,¹)



GEORGE MILTON BENJAMIN.⁹

s. of Rufus and Mary (Benjamin) Whitehead,
b. at Salisbury, Conn., November 12, 1846;
m. at Chelsea, Mass., May 7, 1869, to Celia
Baldwin. They now reside at Westfield, N. J.

CHILDREN X GENERATION.

- 138 RUFUS BALDWIN, b. September 23, 1871.
139 WILL CARLETON, b. February 1, 1877, at
Meriden, Conn.
-

68.

MARY ELLEN WHITEHEAD,⁹ (Mary,⁸
Orange,⁷ Judah,⁶ Joseph,⁵ Joseph,⁴ Joseph,³
Joseph,² John,¹) dau. of Rufus and Mary (Ben-
jamin) Whitehead, b. at Salisbury, Conn.,
September 7, 1848; m. at Sandisfield, Mass.,
May 12, 1867, to Hezekiah Northrop. She
m. 2d, at New Haven, Conn., January 16,
1879, to Ernest Eugene Hart. They now
reside at New Haven, Conn.

CHILDREN X GENERATION.

- 140 CORA MAY, b. May 5, 1868.

BEULAH MATTHEWSON WHITEHEAD,⁹
 (Mary,⁸ Orange,⁷ Judah,⁶ Joseph,⁵ Joseph,⁴
 Joseph,³ Joseph,² John,¹) dau. of Rufus and
 Mary (Benjamin) Whitehead, b. at Winsted,
 Conn., February 16, 1852; m. at Meriden,
 Conn., October 17, 1872, to Lewis Isaac
 Green. They now reside at Meriden, Conn.

CHILDREN X GENERATION.

- 141 BERTHA LEONA, b. July 7, 1873, at Meri-
 den, Conn.
 142 ALBERT EMORY, b. September 21, 1874, at
 Meriden, Conn.
 143 IDA MAY, b. February 8, 1876, at Meriden,
 Conn.
 144 IMOGENE, b. July 30, 1878, at Meriden,
 Conn.

SARAH MARIA LANE,⁹ (Laura,⁸ Orange,⁷
 Judah,⁶ Joseph,⁵ Joseph,⁴ Joseph,³ Joseph,²
 John,¹) dau. of Hosea and Laura (Benjamin)
 Lane, b. at Dover, N. Y., August 2, 1845;



JENNIE ALICE JARBOE BENJAMIN.

m. at Springfield, Mass., October 15, 1866, to Frederick K. Perry. She d. at Waterbury, Conn., October 9, 1883.

CHILDREN X GENERATION.

145 LESLIE EDWIN, b. August 4, 1867.

146 PHILO BEEBE, b. September 22, 1877, at Springfield, Mass.

73.

JANE DENNIS,⁹ (Laura,⁸ Orange,⁷ Judah,⁶ Joseph,⁵ Joseph,⁴ Joseph,³ Joseph,² John,¹) dau. of Joseph and Laura (Benjamin) Dennis, b. at Dover, N. Y., July 13, 1850; m. at Dover, N. Y., May 1871, to John Duncan. She m. 2d, April 23, 1877, to William C. Wheeler. They now reside at Southford, Conn.

CHILDREN X GENERATION.

147 FREDERICK DUNCAN, b. September 13, 1872.

148 WALTER WILLIAM WHEELER, b. December 19, 1880, at Woodbury, Conn.

149 JENNIE AMELIA, b. August 9, 1887, at Woodbury, Conn.

EMILY DENNIS,⁹ (Laura,⁸ Orange,⁷ Judah,⁶ Joseph,⁵ Joseph,⁴ Joseph,³ Joseph,² John,¹)
 dau. of Joseph and Laura (Benjamin) Dennis,
 b. at Dover, N. Y., April 26, 1852; m. at
 Dover, N. Y., June 26, 1872, to George Wash-
 ington Austin. They now reside at Water-
 bury, Conn.

CHILDREN X GENERATION.

- 150 ISAAC, b. May 13, 1873, at Dover, N. Y.
 151 WILLIAM HENRY, b. July 5, 1875, at
 Dover, N. Y.
 152 LAURA ANN, b. October 14, 1880, at
 Washington, Conn.
 153 CLARA MAY, b. November 18, 1886; d.
 January 26, 1888.

JOSEPH BENJAMIN DENNIS,⁹ (Laura,⁸
 Orange,⁷ Judah,⁶ Joseph,⁵ Joseph,⁴ Joseph,³
 Joseph,² John,¹) s. of Joseph and Laura (Ben-
 jamin) Dennis, b. at Dover, N. Y., July 21,



HENRY CLAY BENJAMIN.⁹

1858; m. at Dover, N. Y., in 1890, to Mary Olivet, who d. in April 1893. He d. at Waterbury, Conn., September 29, 1893.

CHILDREN X GENERATION.

154 JOSEPH BENJAMIN, b. August 20, 1892;
d. May 2, 1894.

77.

JENNIE ELIZA FIELDS,⁹ (Jane,⁸ Orange,⁷ Judah,⁶ Joseph,⁵ Joseph,⁴ Joseph,³ Joseph,² John,¹) dau. of Eli and Jane (Benjamin) Fields, b. at McConnellsville, N. Y., March 9, 1853; m. at Meriden, Conn., March 9, 1881, to William Turner Benjamin. (See No. 85.)

79.

HARRY WHITE FIELDS,⁹ (Jane,⁸ Orange,⁷ Judah,⁶ Joseph,⁵ Joseph,⁴ Joseph,³ Joseph,² John,¹) s. of Eli and Jane (Benjamin) Fields,

b. at Buffalo, N. Y., January 15, 1865; m. at Brooklyn, N. Y., June 25, 1890, to Margaret Rudenhouser. They now reside at Brooklyn, N. Y.

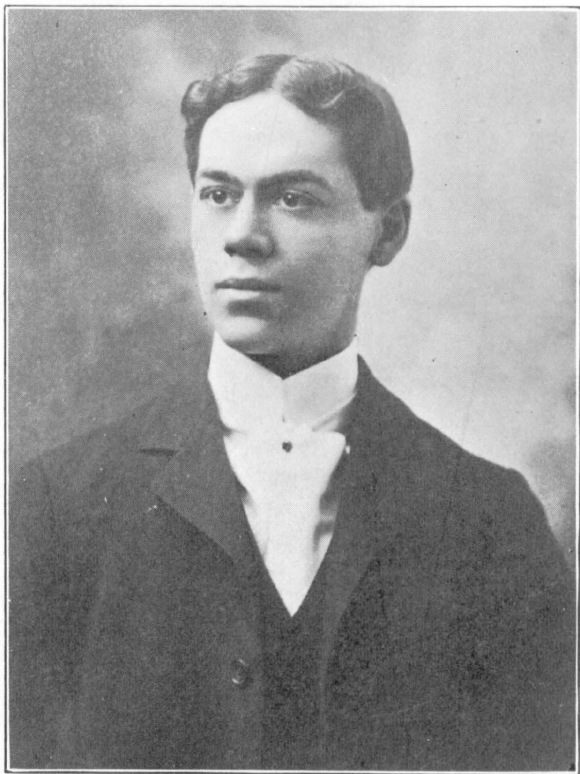
CHILDREN X GENERATION.

155 HARRY WHITE, b. June 24, 1891, at Brooklyn, N. Y.

156 JOSEPH J., b. November 28, 1893, at Brooklyn, N. Y.

ELLIS BENJAMIN BAKER,⁹ (Clarissa,⁸ Orange,⁷ Judah,⁶ Joseph,⁵ Joseph,⁴ Joseph,³ Joseph,² John,¹) s. of John and Clarissa (Benjamin) Baker, b. at Winsted, Conn., September 24, 1854; m. September 21, 1876, to Mary Gorham Frost, dau. of Daniel C. Frost. She was b. at Bristol, Conn., November 11, 1856. They now reside at New Haven, Conn.

"Ellis Benjamin Baker was born in Winsted, Connecticut, on September 24, 1854. Like most boys who have achieved success in busi-



JOHN PECK BENJAMIN, JR.⁹

ness, he left home at an early age. His first employment was in the job room of the Winsted Herald, where he acquired a thorough knowledge of the trade. At the age of fifteen years he entered the employ of Beardsley & Alvord, a firm engaged in general business at West Winsted, where he served three years as clerk. In 1872 he entered the employ of Edward Miller & Company of Meriden, holding the position of Paymaster, and also acting as telegraph operator on the firm's New York wire.

In the early part of 1878, Mr. Baker introduced the first set of telephones into Meriden. He soon saw the possibilities of the telephone, and on January 31st of that year he opened the Meriden District Telephone Exchange, which is said to be the second exchange opened in the world.

Upon the consolidation of the Western Union and the Bell Telephone interests in 1881, he was offered the position of General Superintendent of the Connecticut Telephone Company, with headquarters at New Haven,

which position he has held for the past seventeen years, during which time the corporation became the Southern New England Telephone Company, with the state of Connecticut as its territory.

Mr. Baker is also the Superintendent of the Connecticut Telegraph Company, a corporation operating several hundred miles of telegraph wires throughout the state of Connecticut. He was, for several years before his removal to New Haven, the Superintendent of Fire Alarm Telegraph at Meriden.

Mr. Baker is a Knight Templar, a 32nd degree Mason, a member of the 2nd Company of Governor's Foot Guard, as well as the Connecticut Society of the American Revolution, the Pequot Association, and the Republican League."

From "Telegraphers of To-day."

CHILDREN X GENERATION.

157 ELLIS BENJAMIN, b. July 24, 1877, at Meriden, Conn.

158 CARROLL FROST, b. January 2, 1880, at Springfield, Mass.



JOSEPH HENRY DUCKER.¹⁰

MARY ELLEN BENJAMIN,⁹ (Orange,⁸ Orange,⁷ Judah,⁶ Joseph,⁵ Joseph,⁴ Joseph,³ Joseph,² John,¹) dau. of Orange and Jane Benjamin, b. at Lakeville, Conn., October 2, 1852; m. at Lakeville, Conn., June 25, 1872, to George E. Perkins. They now reside at Winsted, Conn.

CHILDREN X GENERATION.

159 LAURA JULIA, b. April 5, 1874.

ALICE LOUISA BENJAMIN,⁹ (Orange,⁸ Orange,⁷ Judah,⁶ Joseph,⁵ Joseph,⁴ Joseph,³ Joseph,² John,¹) dau. of Orange and Jane Benjamin, b. at Lakeville, Conn., June 14, 1855; m. at Lakeville, Conn., October 24, 1877, to Leman Benson. They now reside at Canaan, Conn.

CHILDREN X GENERATION.

160 SUSIE LOUISA, b. May 24, 1878; d. June 15, 1881.

161 HATTIE MARIA, b. September 25, 1880, at Canaan, Conn.

162 JENNIE ALMIRA, b. February 14, 1884, at Canaan, Conn.

WILLIAM TURNER BENJAMIN,⁹ (John,⁸ Orange,⁷ Judah,⁶ Joseph,⁵ Joseph,⁴ Joseph,³ Joseph,² John,¹) s. of John and Harriet Benjamin, b. at Brooklyn, N. Y., March 17, 1852; m. at Meriden, Conn., March 9, 1881, to Jennie Eliza Fields. (See No. 77.) They now reside at Newark, N. J.

CHILDREN X GENERATION.

- 163 GEORGE FIELDS, b. February 7, 1886; d. February 19, 1886.
 164 FREDERICK HOWARD, b. March 1, 1887.

GEORGE MILTON BENJAMIN,⁹ (John,⁸ Orange,⁷ Judah,⁶ Joseph,⁵ Joseph,⁴ Joseph,³ Joseph,² John,¹) s. of John and Harriet Benjamin, b. at Brooklyn, N. Y., November 11, 1853; m. at Eustis, Fla., February 15, 1887, to Jennie



HARRIET A. DUCKER MIDDLEBROOK.¹⁰

Alice Jarboe. They now reside at New Haven,
Conn.

CHILDREN X GENERATION.

165 WALTER JARBOE, b. December 22, 1889;
d. September 18, 1890.

166 HARRIE LAWRENCE, b. May 3, 1893, at
Kismet, Fla.

88.

HENRY CLAY BENJAMIN,⁹ (John,⁸ Orange,
Judah,⁶ Joseph,⁵ Joseph,⁴ Joseph,³ Joseph,²
John,¹) s. of John and Harriet Benjamin, b.
at Brooklyn, N. Y., July 1, 1857; m. at Acron,
Fla., May 28, 1883, to Lizzie I. Henry. They
now reside at Everett, Mass.

CHILDREN X GENERATION.

167 HARRY CLAY CROCKER, b. November 9,
1884: d. at birth.

93.

WILLIAM TURNER BENJAMIN,⁹ (Richard,⁸
Orange,⁷ Judah,⁶ Joseph,⁵ Joseph,⁴ Joseph,³

Joseph,³ John,¹) s. of Richard and Hannah Benjamin, b. at Washington, Conn., August 17, 1867; m. at Bethlehem, Conn., September 26, 1888, to Alice Baldwin. They now reside at Woodbury, Conn.

CHILDREN X GENERATION.

- 168 GRAHAM ALBERT, b. June 10, 1890, at Woodbury, Conn.
169 CARROLL BAKER, b. July 20, 1891, at Woodbury, Conn.
170 HAZEL DORA, b. January 6, 1898, at Woodbury, Conn.



JEANNETTE TILLOU ANGUS.¹⁹

TENTH GENERATION.

95.

JOHN BENJAMIN TOOKER,¹⁰ (Cornelia,⁹ Joseph,⁸ Orange,⁷ Judah,⁶ Joseph,⁵ Joseph,⁴ Joseph,³ Joseph,² John,¹) s. of Freeman and Cornelia (Benjamin) Tooker, b. at Brooklyn, N. Y., May 21, 1861; m. at Brooklyn, N. Y., July 4, 1882, to Lillian Eliza Dutcher. He d. at Brooklyn, N. Y., May 6, 1887.

CHILDREN XI GENERATION.

- 171 MAY ALLEN, b. April 5, 1883, at Waterbury, Conn.
172 ABBY BENJAMIN, b. May 24, 1884, at Brooklyn, N. Y.; d. September 24, 1885.
173 JOHN BENJAMIN, b. May 1, 1887; d. May 11, 1887.

97.

MARY JEANNETTE TOOKER,¹⁰ (Cornelia,⁹ Joseph,⁸ Orange,⁷ Judah,⁶ Joseph,⁵ Joseph,⁴

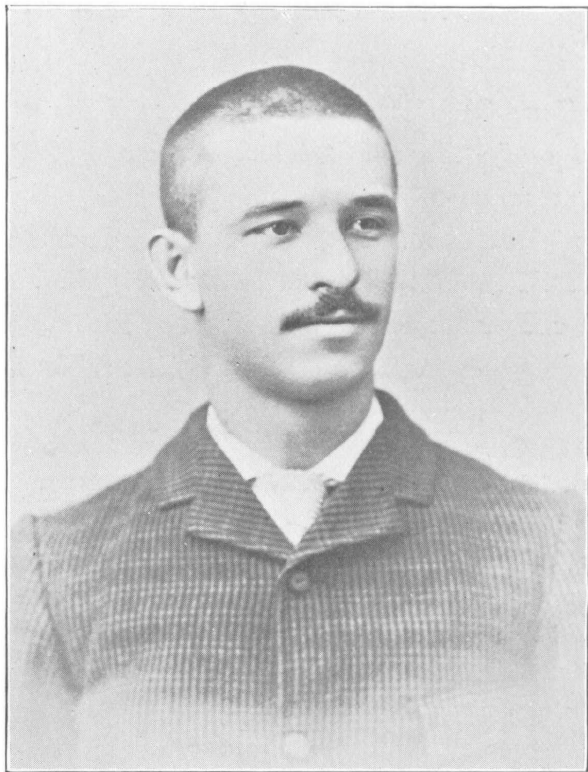
Joseph,⁸ Joseph,² John,¹) dau. of Freeman and Cornelia (Benjamin) Tooker, b. at Brooklyn, N. Y., January 6, 1865; m. at Sing Sing, N. Y., October 19, 1882, to Clarence John Searles. They now reside at Sing Sing, N. Y.

CHILDREN XI GENERATION.

- 174 PERCY MONROE, b. December 8, 1883, at Sing Sing, N. Y.
175 WILLIAM ORVILLE, b. May 10, 1886; d. April 3, 1889.
176 HERBERT SEYMOUR, b. July 27, 1888, at Sing Sing, N. Y.
177 JOHN WOOLSEY, b. February 1, 1891, at Brooklyn, N. Y.

98.

WILLIAM SEYMOUR TOOKER,¹⁰ (Cornelia,⁹ Joseph,⁸ Orange,⁷ Judah,⁶ Joseph,⁵ Joseph,⁴ Joseph,³ Joseph,² John,¹) s. of Freeman and Cornelia (Benjamin) Tooker, b. at Brooklyn, N. Y., March 13, 1869; m. at Brooklyn, N. Y., May 9, 1892, to Charlotte Elizabeth Whitman. They now reside at Brooklyn, N. Y.



THOMAS ALBERT TILLOU.¹⁰

JOSEPH HENRY DUCKER,¹⁰ (Phoebe,⁹ Joseph,⁸ Orange,⁷ Judah,⁶ Joseph,⁵ Joseph,⁴ Joseph,³ Joseph,² John,¹) s. of Peter and Phoebe (Benjamin) Ducker, b. at Brooklyn, N. Y., November 26, 1856; m. at Brooklyn, N. Y., March 7, 1880, to Matilda M. Wade. They now reside at Irvington, N. J.

CHILDREN XI GENERATION.

178 PETER H., b. September 7, 1881, at Glendale, N. Y.

179 PHOEBE E., b. September 14, 1883, at Brooklyn, N. Y.

180 JOSEPH B. W., b. February 4, 1889; d. February 10, 1889.

EMILY J. DUCKER,¹⁰ (Phoebe,⁹ Joseph,⁸ Orange,⁷ Judah,⁶ Joseph,⁵ Joseph,⁴ Joseph,³ Joseph,² John,¹) dau. of Peter and Phoebe (Benjamin) Ducker, b. at Brooklyn, N. Y.,

February 5, 1859; m. at New York, N. Y.,
July 6, 1881, to Byron E. Pink. They now
reside at Brooklyn, N. Y.

CHILDREN XI GENERATION.

- 181 HIRAM V., b. March 24, 1882, at Brook-
lyn, N. Y.
182 HARRY D., b. June 5, 1884, at Brooklyn,
N. Y.
183 JOHN B., b. May 19, 1887, at Brooklyn,
N. Y.
184 THERESA E., b. December 4, 1889, at
Brooklyn, N. Y.
185 KATE, b. May 24, 1892, at Brooklyn, N. Y.

ANNA S. DUCKER,¹⁰ (Phoebe,⁹ Joseph,⁸
Orange,⁷ Judah,⁶ Joseph,⁵ Joseph,⁴ Joseph,³
Joseph,² John,¹) dau. of Peter and Phoebe
(Benjamin) Ducker, b. at Brooklyn, N. Y.,
June 28, 1861; m. at Brooklyn, N. Y., July 5,



WILLIAM GRAHAM TILLOU.¹⁰

1880, to Charles Devendorf. They now reside at Brooklyn, N. Y.

CHILDREN XI GENERATION.

186 HARRIET BENJAMIN, b. March 25, 1884,
at Brooklyn, N. Y.

187 JOSEPH E., b. May 27, 1886; d. July 31,
1887.

102.

HARRIET A. DUCKER,¹⁰ (Phoebe,⁹ Joseph,⁸
Orange,⁷ Judah,⁶ Joseph,⁵ Joseph,⁴ Joseph,³
Joseph,² John,¹) dau. of Peter and Phoebe
(Benjamin) Ducker, b. at Brooklyn, N. Y.,
September 4, 1865; m. at Brooklyn, N. Y.,
June 29, 1896, to Adelbert Middlebrook.
They now reside at Sharon, Ct.

103.

JEANNETTE TILLOU,¹⁰ (Sarah,⁹ Joseph,⁸
Orange,⁷ Judah,⁶ Joseph,⁵ Joseph,⁴ Joseph,³
Joseph,² John,¹) dau. of Thomas and Sarah

(Benjamin) Tillou, b. at Elizabeth, N. J., September 11, 1860; m. at Elizabeth, N. J., January 1, 1883, to Job W. Angus. They now reside at Elizabeth, N. J.

CHILDREN XI GENERATION.

188 HARRY B., b. October 11, 1883, at Elizabeth, N. J.

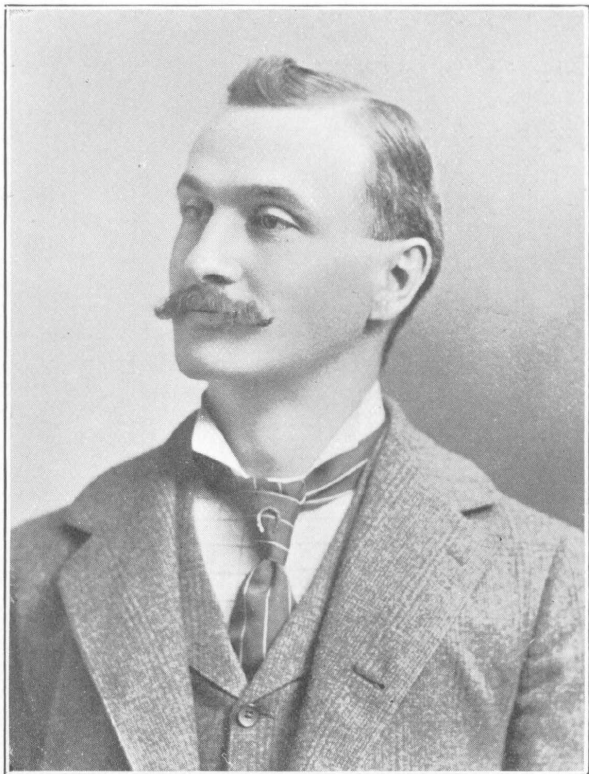
189 DAISY, b. October 18, 1889, at Elizabeth, N. J.

104.

THOMAS ALBERT TILLOU,¹⁰ (Sarah,⁹ Joseph,⁸ Orange,⁷ Judah,⁶ Joseph,⁵ Joseph,⁴ Joseph,³ Joseph,² John,¹) s. of Thomas and Sarah (Benjamin) Tillou, b. at Elizabeth, N. J., September 1, 1862; m. at Elizabeth, N. J., November 10, 1884, to Annie B. Walker.

106.

JOSEPH BENJAMIN TILLOU,¹⁰ (Sarah,⁹ Joseph,⁸ Orange,⁷ Judah,⁶ Joseph,⁵ Joseph,⁴ Joseph,³



JOSEPH BENJAMIN TILLOU.¹⁰

Joseph,² John,¹) s. of Thomas and Sarah (Benjamin) Tillou, b. at Elizabeth, N. J., July 28, 1870; m. at Elizabeth, N. J., July 28, 1891, to Florence May Cupitt. They now reside at Bayonne, N. J.

CHILDREN XI GENERATION.

190 FRANK, b. January 24, 1893, at Elizabeth, N. J.

107.

MARY FRANCES BENJAMIN,¹⁰ (John,⁹ Joseph,⁸ Orange,⁷ Judah,⁶ Joseph,⁵ Joseph,⁴ Joseph,³ Joseph,² John,¹) dau. of John and Abby Benjamin, b. at Elizabeth, N. J., August 11, 1863; m. at Elizabeth, N. J., December 7, 1882, to Edward Harris. They now reside at Elizabeth, N. J.

108.

EDWARD BENJAMIN,¹⁰ (John,⁹ Joseph,⁸ Orange,⁷ Judah,⁶ Joseph,⁵ Joseph,⁴ Joseph,³ Joseph,² John,¹) s. of John and Abby Benjamin,

b. at Elizabeth, N. J. December 31, 1868; m.
at Elizabeth, N. J., May 5, 1890, to Mary
Bulmer. They now reside at Elizabeth, N. J.

CHILDREN XI GENERATION.

191 EDWARD, b. February 10, 1891, at Elizabeth, N. J.

109.

ELLA BENJAMIN,¹⁰ (John,⁹ Joseph,⁸ Orange,⁷
Judah,⁶ Joseph,⁵ Joseph,⁴ Joseph,³ Joseph,² John,¹)
dau. of John and Abby Benjamin, b. at Elizabeth,
N. J., March 24, 1875; m. at Elizabeth,
N. J., November 18, 1891, to Charles White.
They now reside at Elizabeth, N. J.

CHILDREN XI GENERATION.

192 JENNIE FRANCES, b. September 13, 1892,
at Elizabeth, N. J.

111.

KATE OLIVE BENJAMIN,¹⁰ (Charles,⁹ Hiram,⁸
Orange,⁷ Judah,⁶ Joseph,⁵ Joseph,⁴ Joseph,³)



ELLIS BENJAMIN BAKER, Jr.¹⁰

Joseph,² John,¹) dau. of Charles and Anna Benjamin, b. at Saranac, Mich., August 29, 1868; m. at Saranac, Mich., April 26, 1885, to Charles Kinney. She m. 2d, at Lake Odessa, Mich., June 28, 1891, to Harvey L. Train. They now reside at Saranac, Mich.

CHILDREN XI GENERATION.

193 EFFIE ESTELLE KINNEY, b. August 14, 1886.

194 LEROY KARL TRAIN, b. November 10, 1892.

195 MYRTLE BLANCHE, b. December 12, 1894.

196 ESTHER RUTH, b. October, 1896; d. December, 1896.

113.

JOHN BENJAMIN,¹⁰ (Charles,⁹ Hiram,⁸ Orange,⁷ Judah,⁶ Joseph,⁵ Joseph,⁴ Joseph,³ Joseph,² John,¹) s. of Charles and Anna Benjamin, b. at Saranac, Mich., September 22, 1872; m. at Ionia, Mich., December 12, 1894, to Pearl Chamberlain, who d. at Saranac, Mich. May 8, 1897. He now lives at Saranac, Mich.

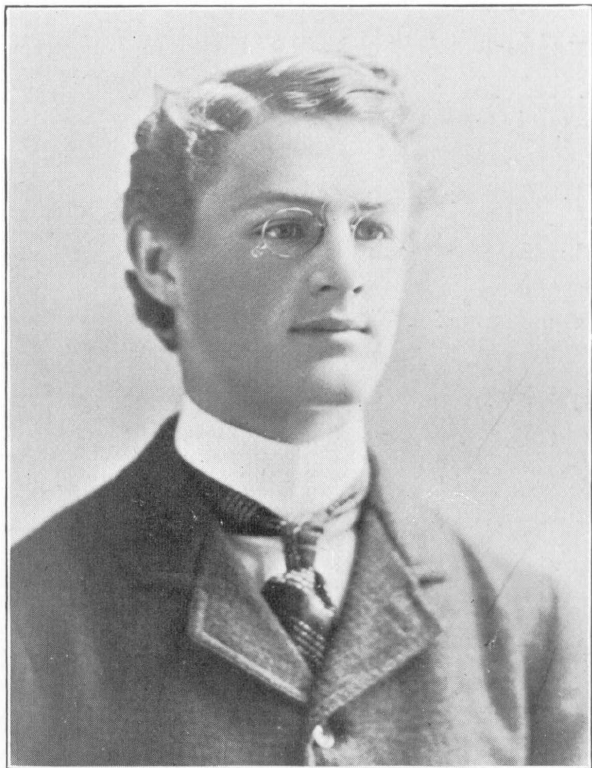
CHARLES JARVIS BENJAMIN,¹⁰ (Harvey,⁹ Hiram,⁸ Orange,⁷ Judah,⁶ Joseph,⁵ Joseph,⁴ Joseph,³ Joseph,² John,¹) s. of Harvey and Anna Benjamin, b. at Kingsbury, Ills., July 17, 1867; m. at Alliance, Neb., September 23, 1894, to Relda Thorlton. They now reside at Alliance, Neb.

CHILDREN XI GENERATION.

197 HARVEY, b. November 8, 1895, at Alliance, Neb.

198 OLIVE ANNA, b. September 13, 1897, at Alliance, Neb.

WILLARD ALVIRA BENJAMIN,¹⁰ (Harvey,⁹ Hiram,⁸ Orange,⁷ Judah,⁶ Joseph,⁵ Joseph,⁴ Joseph,³ Joseph,² John,¹) s. of Harvey and Anna Benjamin, b. at Kingsbury, Ills., April 7, 1871; m. at Cherry Grove, Iowa, May 18,



CARROLL FROST BAKER.¹⁰

1889, to Rhoda Lenora Baker. They now reside at Nashville, Iowa.

CHILDREN XI GENERATION.

- 199 HARVEY EDWARD, b. February 18, 1890,
at Nashville, Iowa.
- 200 CHARLES DALE, b. July 27, 1892, at Nash-
ville, Iowa.
- 201 THOMAS ERNEST, b. April 26, 1895, at
Nashville, Iowa.
- 202 VELMA ZENIA, b. January 5, 1898, at
Nashville, Iowa.

125.

EMORY ARTHUR WHITEHEAD,¹⁰ (Marcus (Whitehead),⁹ Mary,⁸ Orange,⁷ Judah,⁶ Joseph,⁵ Joseph,⁴ Joseph,³ Joseph,² John,¹) s. of Marcus and Lizzie (Higgins) Whitehead, b. at Meriden, Conn., May 9, 1866; m. at Meriden, Conn., November 10, 1895, to Mary Cecelia Savage. They now reside at Meriden, Conn.

CHILDREN XI GENERATION.

- 203 STELLA CECELIA, b. March 20, 1896.
- 204 MERRILE FLORENCE, b. July 11, 1897.

BURTON OLIN WHITEHEAD,¹⁰ (Marcus (Whitehead),⁹ Mary,⁸ Orange,⁷ Judah,⁶ Joseph,⁵ Joseph,⁴ Joseph,³ Joseph,² John,¹) s. of Marcus and Lizzie (Higgins) Whitehead, b. at Meriden, Conn., December 18, 1874; m. at New Haven, Conn., November 15, 1896, to Delia Klein. They now reside at Meriden, Conn.

CHILDREN XI GENERATION.

205 LLOYD, b. July 6, 1897.



VIOLA DAISY WHITEHEAD,¹⁰ (Marcus (Whitehead),⁹ Mary,⁸ Orange,⁷ Judah,⁶ Joseph,⁵ Joseph,⁴ Joseph,³ Joseph,² John,¹) dau. of Marcus and Lizzie (Higgins) Whitehead, b. at Meriden, Conn., June 18, 1877; m. at Meriden, Conn., April 26, 1898, to William J. King. They now reside at Wallingford, Conn.



FREDERICK HOWARD BENJAMIN.¹⁰

CARRIE B. WHITEHEAD,¹⁰ (Luther (Whitehead),⁹ Mary,⁸ Orange,⁷ Judah,⁶ Joseph,⁵ Joseph,⁴ Joseph,³ Joseph,² John,¹) dau. of Luther and Miranda (Wildy) Whitehead, b. at Mohawk, N. Y., December 15, 1863; m. at New Haven, Conn., June 4, 1885, to Harvey B. Freise. They now reside at Springfield, Mass.

CHILDREN XI GENERATION.

- 206 VENIE VICTORIA, b. June 21, 1887, at Springfield, Mass.
 207 EARLE HARRISON, b. January 12, 1889, at Springfield, Mass.
 208 RUTH GLENDORA, b. January 9, 1892, at Springfield, Mass.
 209 ANNA ELIZA, b. August 5, 1893, at Springfield, Mass.

IMOGENE L. WHITEHEAD,¹⁰ (Luther (Whitehead),⁹ Mary,⁸ Orange,⁷ Judah,⁶ Joseph,⁵ Joseph,⁴ Joseph,³ Joseph,² John,¹) dau. of Luther and Imogene (Steele) Whitehead, b. at New

Haven, Conn., May 15, 1874; m. at New Haven, Conn., June 11, 1896, to Sherman R. Haight. They now reside at New Haven, Conn.

CHILDREN XI GENERATION.

210 IMOGENE S., b. April 14, 1897, at New Haven, Conn.

138.

RUFUS BALDWIN WHITEHEAD,¹⁰ (Emory (Whitehead),⁹ Mary,⁸ Orange,⁷ Judah,⁶ Joseph,⁵ Joseph,⁴ Joseph,³ Joseph,² John,¹) s. of Emory and Celia (Baldwin) Whitehead, b. at Meriden, Conn., September 23, 1871; m. at Westfield, N. J., September 14, 1897, to Ann Augusta Warncke. He is a physician and resides at Westfield, N. J.

140.

CORA MAY NORTROP,¹⁰ (Mary (Whitehead),⁹ Mary,⁸ Orange,⁷ Judah,⁶ Joseph,⁵ Joseph,⁴



HARRIE LAWRENCE BENJAMIN.¹⁰

Joseph,³ Joseph,³ John,¹) dau. of Hezekiah and Mary (Whitehead) Northrop, b. at Meriden, Conn., May 5, 1868; m. at New Haven, Conn., December 7, 1892, to Andrew K. Meigs. They now reside at New Haven, Conn.

CHILDREN XI GENERATION.

211 NORMAN K., b. July 25, 1895, at New Haven, Conn.

141.

BERTHA LEONA GREEN,¹⁰ (Beulah (Whitehead),⁹ Mary,⁸ Orange,⁷ Judah,⁶ Joseph,⁵ Joseph,⁴ Joseph,³ Joseph,² John,¹) dau. of Lewis and Beulah (Whitehead) Green, b. at Meriden, Conn., July 7, 1873; m. at Meriden, Conn., January 1, 1896, to William D. Forbes. They now reside at Meriden, Conn.

CHILDREN XI GENERATION.

212 BERTHA MARIAN, b. October 4, 1896, at Meriden, Conn.

LESLIE EDWIN PERRY,¹⁰ (Sarah (Lane),⁹ Laura,⁸ Orange,⁷ Judah,⁶ Joseph,⁵ Joseph,⁴ Joseph,³ Joseph,² John,¹) s. of Frederick and Sarah (Lane) Perry, b. at Hartford, Conn., August 4, 1867; m. at Essex, Conn., June 4, 1895, to May Ernestine Pratt. They now reside at Waterbury, Conn.

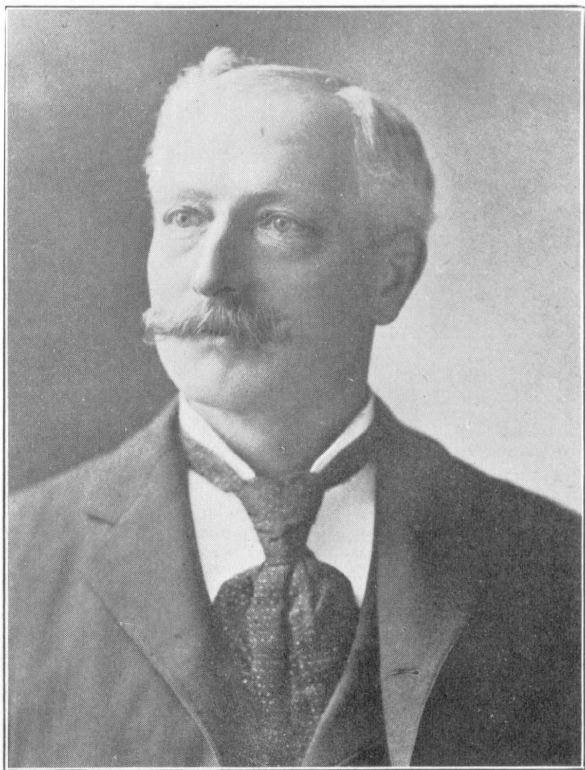
CHILDREN XI GENERATION.

213 ELIZABETH PRATT, b. March 16, 1896, at Essex, Conn.

FREDERICK DUNCAN,¹⁰ (Jane (Dennis),⁹ Laura,⁸ Orange,⁷ Judah,⁶ Joseph,⁵ Joseph,⁴ Joseph,³ Joseph,² John,¹) s. of John and Jane (Dennis) Duncan, b. at Dover, N. Y., September 13, 1872; m. at Woodbury, Conn., June —, 1896, to Carrie L. Saxton. They now reside at New Milford, Ct.

CHILDREN XI GENERATION.

214 WILLIAM ARTHUR, b. June 13, 1897, at New Milford, Conn.



WILLIAM VIRGIL WILSON, M.D.

LAURA JULIA PERKINS,¹⁰ (Mary,⁹ Orange,⁸ Orange,⁷ Judah,⁶ Joseph,⁵ Joseph,⁴ Joseph,³ Joseph,² John,¹) dau. of George and Mary (Benjamin) Perkins, b. at Winsted, Conn., April 5, 1874; m. at Winsted, Conn., February 19, 1896, to Lucius B. Steele. They now reside at Waterbury, Conn.

CHILDREN XI GENERATION.

215 GEORGE EVERETT, b. March 23, 1897, at Winsted, Conn.

WILLIAM VIRGIL WILSON,⁸ s. of Julia Benjamin⁷ and Elisha Wilson of Milford, Conn., grandson of John Benjamin⁶ and Comfort Hine of Milford, Conn., and great grandson of Barzillai Benjamin⁵ (see No. 32) and Ann Cheadle of Milford, Conn., b. in Milford, Conn., December 26, 1845. Graduated from the Yale Medical School in 1867, and later took a post-graduate course in New York. Married at Hoosac Corners, New York, November 7, 1867, to Nellie Hubbell Brayton,

dau. of William P. Brayton, of North Adams,
Mass.

CHILDREN IX GENERATION.

CORNELIA GERTRUDE, b. November 10, 1869 ;
d. November 30, 1878.

PHILIP ELISHA, b. January 18, 1872.

NELLIE ADELINE, b. November 5, 1878.

ANNETTA, b. July 17, 1881.

ELIZABETH BRAYTON, b. January 3, 1884.

CLINTON JAMES BENJAMIN, b. at Monson,
Mass., October 24, 1870, s. of James Nathaniel
Benjamin, b. at Hinsdale, Mass., July 22,
1845, and Mary L. (Ford) Benjamin ; grandson
of Nathaniel Palmer Benjamin, b. at Mattea-
wan, N. Y., December 2, 1823, and Mary
(Kershaw) Benjamin ; great grandson of Jesse
Benjamin, b. in Orange County, N. Y., and
great great grandson of Palmer Benjamin,
whose connection to John¹ has not yet been
traced. Mr. Benjamin resides in Waterbury,
Conn., and is Chief Operator at the Southern
New England Telephone Co.'s Exchange in
that city.



CLINTON JAMES BENJAMIN.

ILLUSTRATIONS.

		PAGE.
	Coat of Arms,	9
103	Augus, (Tillou) Jeannette, ¹⁰	54
158	Baker, Carroll Frost, ¹⁰	64
82	“ Ellis Benjamin, ⁹	34
157	“ Ellis Benjamin, ¹⁰	62
82a	“ (Frost) Mary Gorham, ⁹	36
51	Benjamin, (Baker) Clarissa, ⁸	20
	“ Clinton James,	72
164	“ Frederick Howard, ¹⁰	66
86	“ George Milton, ⁹	42
166	“ Harrie Lawrence, ¹⁰	68
88	“ Henry Clay, ⁹	46
50	“ (Fields) Jane, ⁸	18
77	“ (Fields) Jennie Eliza, ⁹	40
86a	“ (Jarboe) Jennie Alice, ⁹	44
53	“ John Peck, ⁸	24
90	“ John Peck, ⁹	48
45	“ Joseph Seymour, ⁸	14
47	“ (Whitehead) Mary, ⁸	16
43	“ Orange, ⁷	12
52	“ Orange, ⁸	22
56	“ (Ducker) Phoebe Ann, ⁹	28
54	“ Richard Graham, ⁸	26
57	“ (Tillou) Sarah Elizabeth, ⁹	32
85	“ William Turner, ⁹	38

		PAGE.
99	Ducker, Joseph Henry, ¹⁰	50
102	Middlebrook, (Ducker) Harriet A., ¹⁰	52
106	Tillou, Joseph Benjamin, ¹⁰	60
104	“ Thomas Albert, ¹⁰	56
57a	“ Thomas J. T., ⁹	30
105	“ William Graham, ¹⁰	58
	Wilson, William Virgil, ⁸	70

INDEX.

NO.	NAME.	PAGES.
189	Angus, Daisy, ¹¹	60
188	“ Harry B., ¹¹	60
103	“ Jeannette, ¹⁰	60
103a	“ Job W., ¹⁰	60
153	Austin, Clara May, ¹⁰	46
74	“ Emily, ⁹	46
74a	“ George Washington, ⁹	46
150	“ Isaac, ¹⁰	46
152	“ Laura Ann, ¹⁰	46
151	“ William Henry, ¹⁰	46
158	Baker, Carroll Frost, ¹⁰	50
51	“ Clarissa Benjamin, ⁸	30, 48
82	“ Ellis Benjamin, ⁹	3, 30, 48
157	“ Ellis Benjamin, ¹⁰	50
81	“ Emma Clarissa, ⁹	30
80	“ Emmerson John, ⁹	30
51a	“ John Fletcher, ⁸	30, 48
82a	“ Mary Gorham, ⁹	48
120a	“ Rhoda Lenora, ¹⁰	65
93a	Baldwin, Alice, ⁹	54
67a	“ Celia, ⁹	43, 68
58a	Benjamin, Abby T., ⁹	37, 61, 62
9	“ Abel, ²	13
28	“ Abiel, ⁴	15

NO.	NAME.	PAGES.
1a	Benjamin, Abigail, ¹	II, 13
3	" Abigail, ³	II, 13
10	" Abigail, ³	14
29a	" Abigail, ⁵	17, 18
59	" Albert Clement, ⁹	27
93a	" Alice, ⁹	54
84	" Alice Louisa, ⁹	31, 35
	" Ann, ³	II
	" Ann, ⁵	71
62a	" Anna Eliza, ⁹	39, 64
61a	" Anna Maria, ⁹	38, 63
121	" Arthur James, ¹⁰	39
32	" Barzillai, ⁵	16, 71
117	" Benjamin Stephen, ¹⁰	38
8	" Caleb, ³	13
169	" Carroll Baker, ¹⁰	54
61	" Charles Andrew, ⁹	27, 38, 63
200	" Charles Dale, ¹¹	65
119	" Charles Jarvis, ¹⁰	39, 64
91	" Clara, ⁹	33
43a	" Clarissa, ⁷	25, 26, 27, 28, 29, 30, 31, 32
51	" Clarissa, ⁸	25, 30, 48
	" Clinton James,	72
	" Comfort, ⁶	71
55	" Cornelia Jeannette, ⁹	26, 34, 55, 56
26	" Daniel, ⁴	15
22a	" Deborah, ⁴	16, 17
33	" Deborah, ⁵	16
108	" Edward, ¹⁰	37, 61
191	" Edward, ¹¹	62
109	" Ella, ¹⁰	37, 62

NO.	NAME.	PAGES.
15	Benjamin, Eliz., ⁸	14, 16
13 ^a	“ Eliz., ⁸	15
21	“ Eliz., ⁴	15
30	“ Eliz., ⁵	16
45 ^a	“ Emily Ann, ⁸	26, 34, 35, 37
87	“ Francis Ashenfelter, ⁹	32
114	“ Franklin Hiram, ¹⁰	38
116	“ Fred Augustus, ¹⁰	38
164	“ Frederick Howard, ¹⁰	52
163	“ George Fields, ¹⁰	52
86	“ George Milton, ⁹	32, 52
115	“ George Septer, ¹⁰	38
24	“ Grace, ⁴	15
168	“ Graham Albert, ¹⁰	54
11	“ Hannah, ⁸	14
54 ^a	“ Hannah Jane, ⁸	33, 54
166	“ Harrie Lawrence, ¹⁰	53
53 ^a	“ Harriet Augusta, ⁸	32, 52, 53
49	“ Harriet Whipple, ⁸	25
167	“ Harry Clay Crocker, ¹⁰	53
197	“ Harvey, ¹¹	64
199	“ Harvey Edward, ¹¹	65
62	“ Harvey Leroy, ⁹	27, 38, 39, 64
170	“ Hazel Dora, ¹⁰	54
88	“ Henry Clay, ⁹	32, 53
46	“ Hiram, ⁸	25, 27, 38, 40
122	“ Ida May, ¹⁰	39
37	“ Isaac, ⁵	16
31	“ James, ⁵	16
	“ James Nathaniel,	72
50	“ Jane, ⁸	25, 29, 47

NO.	NAME.	PAGES.
52a	Benjamin, Jane L., ⁸	31, 51
25	" Jedediah, ⁴	15
6a	" Jemima, ⁹	14
17	" Jemima, ⁸	14
86a	" Jennie Alice, ⁹	52
77	" Jennie Eliza, ⁹	47, 52
	" Jesse,	72
1	" John, ¹	6, 11, 12, 72
2	" John, ²	11, 13
16	" John, ³	14
27	" John, ⁴	15
	" John, ⁶	71
113	" John, ¹⁰	38, 63
53	" John Peck, ⁸	25, 31, 52, 53
90	" John Peck, ⁹	32
58	" John Woolsey, ⁹	26, 37, 61, 62
6	" Joseph, ²	13, 14
13	" Joseph, ³	14, 15, 16
22	" Joseph, ⁴	15, 16, 17
29	" Joseph, ⁵	16, 17, 18
45	" Joseph Seymour, ⁸	25, 26, 34, 35, 37
7	" Joshua, ²	13
34	" Josiah, ⁵	16
41	" Judah, ⁶	17, 18, 19, 20, 21, 22, 23, 24
	" Julia, ⁷	71
111	" Kate Olive, ¹⁰	38, 62
19	" Kezia, ⁸	14
48	" Laura, ⁸	25, 28, 44, 45, 46
44	" Lavinia, ⁷	18
88a	" Lizzie I., ⁹	53
89	" Maria Amelia, ⁹	32

NO.	NAME.	PAGES.
52b	Benjamin, Maria E., ⁸	31
	“ Mary,	72
5	“ Mary, ²	13
12	“ Mary, ³	14
35	“ Mary, ⁵	16
42	“ Mary, ⁶	17, 18
47	“ Mary, ⁸	25, 27, 41, 42, 43, 44
108a	“ Mary, ¹⁰	62
46a	“ Mary Ann, ⁸	27, 38, 40
83	“ Mary Ellen, ⁹	31, 51
52c	“ Mary F., ⁸	31
107	“ Mary Frances, ¹⁰	37, 61
	“ Mary L.,	72
14	“ Mercy, ³	14
35	“ Nathan, ⁵	16
	“ Nathaniel Palmer,	72
92	“ O., ⁹	33
20	“ Obed, ⁴	15
43	“ Orange, ⁷ 3, 18, 25, 26, 27, 28, 29, 30, 31, 32	
52	“ Orange, ⁸	25, 31, 51
198	“ Olive Anna, ¹¹	64
63	“ Olive Jane, ⁹	27, 40
	“ Palmer,	72
113a	“ Pearl, ¹⁰	63
40	“ Peleg, ⁶	17, 18
56	“ Phoebe Ann, ⁹	26, 34, 57, 58, 59
94	“ Ranson, ⁹	33
119a	“ Reida, ¹⁰	64
120a	“ Rhoda Lenora, ¹⁰	65
	“ Richard, ¹	11
54	“ Richard Graham, ⁸	25, 32, 54

NO.	NAME.	PAGES.
118	Benjamin, Rose Estella, ¹⁰	38
4	" Samuel, ²	13
39	" Samuel, ⁶	17, 18
66	" Sarah, ²	14, 15
18	" Sarah, ³	14
23	" Sarah, ⁴	15
57	" Sarah Elizabeth, ⁹	26, 35, 59, 60, 61
110	" Sherman, ¹⁰	38
41a	" Susan, ⁶	18, 24
201	" Thomas Ernest, ¹¹	65
202	" Velma Zenia, ¹¹	65
165	" Walter Jarboe, ¹⁰	53
120	" Willard Alvira, ¹⁰	39, 64
38	" William, ⁶	17, 18
112	" William, ¹⁰	38
60	" William Henry, ⁹	27
85	" William Turner, ⁹	32, 47, 52
93	" William Turner, ⁹	33, 53
84	Benson, Alice Louisa, ⁹	51
161	" Hattie Maria, ¹⁰	51
162	" Jennie Almira, ¹⁰	51
84a	" Leman, ⁹	51
160	" Susie Louisa, ¹⁰	51
	Berington, John,	5
	Brayton, Nellie Hubbell, ³	71
	" William P.,	72
108a	Bulmer, Mary, ¹⁰	62
113a	Chamberlain, Pearl, ¹⁰	63
	Cheedle, Ann, ⁵	71
62a	Clark, Anna Eliza, ⁹	39
22a	" Deborah, ⁴	16

NO.	NAME.	PAGES.
6b	Clark, Sarah, ⁹	14
13a	Cook, Eliz., ⁸	15
106a	Cupitt, Florence May, ¹⁰	61
	de Lacey, Ilbert,	5
	" John,	5
	" Roger,	5
	" Walter,	5
74	Dennis, Emily, ⁹	29, 46
73	" Jane, ⁹	29, 45, 70
48b	" Joseph, ⁸	29, 45, 46
75	" Joseph Benjamin, ⁹	29, 46
154	" Joseph Benjamin, ¹⁰	47
48	" Laura Benjamin, ⁸	28, 45, 46
75a	" Mary, ⁹	47
101	Devendorf, Anna S., ¹⁰	58
101a	" Charles, ¹⁰	59
186	" Harriet Benjamin, ¹¹	59
187	" Joseph E., ¹¹	59
29a	Dibble, Abigail, ⁵	17
52c	Donnelly, Mary F., ⁸	31
63a	Dorin, Charles, ⁹	40
124	" Harley Edward, ¹⁰	40
63	" Olive Jane Benjamin, ⁹	40
123	" William Hiram, ¹⁰	40
101	Ducker, Anna S., ¹⁰	35, 58
100	" Emily J., ¹⁰	35, 57
102	" Harriet A., ¹⁰	35, 59
180	" Joseph B. W., ¹¹	57
99	" Joseph Henry, ¹⁰	35, 57
99a	" Matilda M., ¹⁰	57
56a	" Peter, ⁹	35, 57, 58, 59

NO.	NAME.	PAGES.
178	Ducker, Peter H., ¹¹	57
56	" Phoebe Ann Benjamin, ⁹	34, 57, 58, 59
179	" Phoebe E., ¹¹	57
147a	Duncan, Carrie L., ¹⁰	70
147	" Frederick, ¹⁰	45, 70
73	" Jane, ⁹	45, 70
73a	" John, ⁹	45, 70
214	" William Arthur, ¹¹	70
95a	Dutcher, Lillian Eliza, ¹⁰	55
1a	Eddy, Abigail, ¹	11
	Enos, Col.,	20
50a	Fields, Eli, ⁸	29, 47
78	" Harriet Mary, ⁹	30
79	" Harry White, ⁹	30, 47
155	" Harry White, ¹⁰	48
76	" Iden Henry, ⁹	30
50	" Jane Benjamin, ⁸	29, 47
77	" Jennie Eliza, ⁹	30, 47, 52
156	" Joseph J., ¹⁰	48
79a	" Margaret, ⁹	48
141	Forbes, Bertha Leona, ¹⁰	69
212	" Bertha Marian, ¹¹	69
141a	" William D., ¹⁰	69
	Ford, Mary L.,	72
209	Freise, Anna Eliza, ¹¹	67
132	" Carrie B., ¹⁰	67
207	" Earle Harrison, ¹¹	67
132a	" Harvey B., ¹⁰	67
208	" Ruth Glendora, ¹¹	67
206	" Venie Victoria, ¹¹	67
	Frost, Daniel C.,	48

NO.	NAME.	PAGES.
82a	Frost, Mary Gorham, ⁹	48
61a	Furniss, Anna Maria, ⁹	38
142	Greene, Albert Emory, ¹⁰	44
141	“ Bertha Leona, ¹⁰	44, 69
70	“ Beulah Matthewson, ⁹	44, 69
143	“ Ida May, ¹⁰	44
144	“ Imogene, ¹⁰	44
70a	“ Lewis Isaac, ⁹	44, 69
210	Haight, Imogene, ¹¹	68
135	“ Imogene S., ¹⁰	67
135a	“ Sherman R., ¹⁰	68
107a	Harris, Edward, ¹⁰	61
107	“ Mary Frances, ¹⁰	61
68b	Hart, Ernest Eugene, ⁹	43
68	“ Mary Ellen, ⁹	43
88	Henry, Lizzie I., ⁹	53
64a	Higgins, Lizzie Josephine, ⁹	41, 65, 66
	Hine, Comfort, ⁸	71
86a	Jarboe, Jennie Alice, ⁹	52
	Kershaw, Mary,	72
128	King, Viola Daisy, ¹⁰	66
128a	“ William J., ¹⁰	66
111a	Kinney, Charles, ¹⁰	63
193	“ Effie Estelle, ¹¹	63
111	“ Kate Olive, ¹⁰	63
127a	Klein, Delia, ¹⁰	66
6a	Lambert, Jemima, ²	14
	“ Thomas,	14
48a	Lane, Hosea D., ⁸	29, 44
48	“ Laura Benjamin, ⁹	28, 44
72	“ Sarah Maria, ⁹	29, 44, 70

NO.	NAME.	PAGES.
140a	Meigs, Andrew K., ¹⁰	69
140	“ Cora May, ¹⁰	68
211	“ Norman K., ¹¹	69
102a	Middlebrook, Adelbert ¹⁰	59
102	“ Harriet A., ¹⁰	59
	Mix, Capt. Caleb,	20, 21
	Moseley, Col. Increase,	20, 21
140	Northrop, Cora May, ¹⁰	43, 68
68a	“ Hezekiah, ⁹	43, 69
68	“ Mary Ellen, ⁹	43, 69
75a	Olivet, Mary, ⁹	47
83a	Perkins, George E., ⁹	51, 71
159	“ Laura Julia, ¹⁰	51, 71
83	“ Mary Ellen, ⁹	51, 71
213	Perry, Elizabeth Pratt, ¹¹	70
72a	“ Frederick K., ⁹	45, 70
145	“ Leslie Edwin, ¹⁰	45, 70
145a	“ May Ernestine, ¹⁰	70
146	“ Philo Beebe, ¹⁰	45
72	“ Sarah Maria, ⁹	44, 70
100a	Pink, Byron E., ¹⁰	58
100	“ Emily J., ¹⁰	57
182	“ Harry D., ¹¹	58
181	“ Hiram V., ¹¹	58
183	“ John B., ¹¹	58
185	“ Kate, ¹¹	58
184	“ Theresa E., ¹¹	58
145a	Pratt, May Ernestine, ¹⁰	70
54a	Rowe, Hannah Jane, ⁸	33
79a	Rudenhouser, Margaret, ⁹	48
125a	Savage, Mary Cecelia, ¹⁰	65

NO.	NAME.	PAGES.
147a	Sexton, Carrie L., ¹⁰	70
	Scott, Gen. Charles,	19
97a	Searles, Clarence John, ¹⁰	56
176	“ Herbert Seymour, ¹¹	56
177	“ John Woolsey, ¹¹	56
97	“ Mary Jeannette, ¹⁰	55
174	“ Percy Monroe, ¹¹	56
175	“ William Orville, ¹¹	56
	Seymour, Capt.,	19
	Sheldon, Col. Elisha,	19, 22, 23
	Shethar, Capt. John,	21
215	Steele, George Everett, ¹¹	71
65b	“ Imogene, ⁹	42, 67
159	“ Laura Julia, ¹⁰	71
159a	“ Lucius B., ¹⁰	71
52b	Stocking, Mary E., ⁸	31
	Talmadge, Maj.,	19
119a	Thorlton, Relda, ¹⁰	64
43a	Thorp, Clarissa, ⁷	25
104a	Tillou, Annie B., ¹⁰	60
	“ Capt.,	36
106a	“ Florence May, ¹⁰	61
190	“ Frank, ¹¹	61
103	“ Jeannette, ¹⁰	37, 59
106	“ Joseph Benjamin, ¹⁰	37, 60
57	“ Sarah Elizabeth Benjamin, ⁹	35, 59, 60, 61
104	“ Thomas Albert, ¹⁰	37, 60
57a	“ Thomas J. T. ⁹	35, 59, 60, 61
105	“ William Graham, ¹⁰	37
172	Tooker, Abby Benjamin, ¹¹	55
96	“ Algernon S., ¹⁰	34

NO.	NAME.	PAGES.
98a	Tooker, Charlotte Elizabeth, ¹⁰	56
55	“ Cornelia Jeannette Benjamin, ⁹	34, 55, 56
55a	“ Freeman, ⁹	34, 55, 56
95	“ John Benjamin, ¹⁰	34, 55
173	“ John Benjamin, ¹¹	55
95a	“ Lillian Eliza, ¹⁰	55
97	“ Mary Jeannette, ¹⁰	34, 55
171	“ May Allen, ¹¹	55
98	“ William Seymour, ¹⁰	34, 56
196	Train, Esther Ruth, ¹¹	63
111b	“ Harvey L., ¹⁰	63
111	“ Kate Olive, ¹⁰	63
194	“ Leroy Karl, ¹¹	63
46a	“ Mary Ann, ⁸	27
195	“ Myrtle Blanche, ¹¹	63
53a	Turner, Harriet Augusta, ⁸	32
99a	Wade Matilda M., ¹⁰	57
104a	Walker, Annie B., ¹⁰	60
138a	Warncke, Ann Augusta, ¹⁰	68
73	Wheeler, Jane, ⁹	45
149	“ Jennie Amelia, ¹⁰	45
148	“ Walter William, ¹⁰	45
73a	“ William C., ⁹	45
109a	White, Charles, ¹⁰	62
109	“ Ella Benjamin, ¹⁰	62
192	“ Jennie Frances, ¹¹	62
134	Whitehead, Alice M., ¹⁰	42
138a	“ Ann Augusta, ¹⁰	58
70	“ Beulah Matthewson, ⁹	28, 44, 69
127	“ Burton Olin, ¹⁰	41, 66
132	“ Carrie B., ¹⁰	42, 67

NO.	NAME.	PAGES.
67a	Whitehead, Celia, ⁹	43, 68
131	“ Clifford Harrison, ¹⁰	41
127a	“ Delia, ¹⁰	66
125	“ Emory Arthur, ¹⁰	41, 65
67	“ Emory John, ⁹	28, 42, 68
126	“ Estella Luella, ¹⁰	41
129	“ Florence Alice, ¹⁰	41
137	“ Florence E., ¹⁰	42
133	“ Hattie L., ¹⁰	42
65b	“ Imogene, ⁹	42, 67
135	“ Imogene L., ¹⁰	42, 67
66	“ James Alonzo, ⁹	28
71	“ Jimmie Benjamin, ⁹	28
64a	“ Lizzie Josephine, ⁹	41, 65, 66
205	“ Lloyd, ¹¹	66
65	“ Luther Henry, ⁹	28, 42, 67
64	“ Marcus Justus, ⁹	28, 40, 41, 65, 66
47	“ Mary Benjamin, ⁸	27, 40, 42, 43, 44
125a	“ Mary Cecelia, ¹⁰	65
68	“ Mary Ellen, ⁹	28, 43
204	“ Merrile Florence, ¹¹	65
65a	“ Miranda, ⁹	42, 67
136	“ Oscar N., ¹⁰	42
138	“ Rufus Baldwin, ¹⁰	43, 68
47a	“ Rufus Justus, ⁸	28, 40, 42, 43, 44
69	“ Rufus Murville, ⁹	28
203	“ Stella Cecelia, ¹¹	65
130	“ Wallace Almirian, ¹⁰	41
128	“ Viola Daisy, ¹⁰	41, 66
139	“ Will Carleton, ¹⁰	43
98a	Whitman, Charlotte Elizabeth, ¹⁰	56

NO.	NAME.	PAGES.
65a	Wildy, Miranda, ⁹	42, 67
58a	Wilson, Abby T., ⁹	37
	" Cornelia Gertrude, ⁹	72
	" Elisha, ⁷	71
	" Elizabeth Brayton, ⁹	72
	" Julia, ⁷	71
	" Nellie Adeline, ⁹	72
	" Nellie Hubbell, ⁸	71
	" Philip Elisha, ⁹	72
	" William Virgil, ⁸	3, 71
44	Wooden, Lavinia, ⁷	18
45a	Woolsey, Emily Ann, ⁸	26
52a	Wright, Jane L., ⁸	31